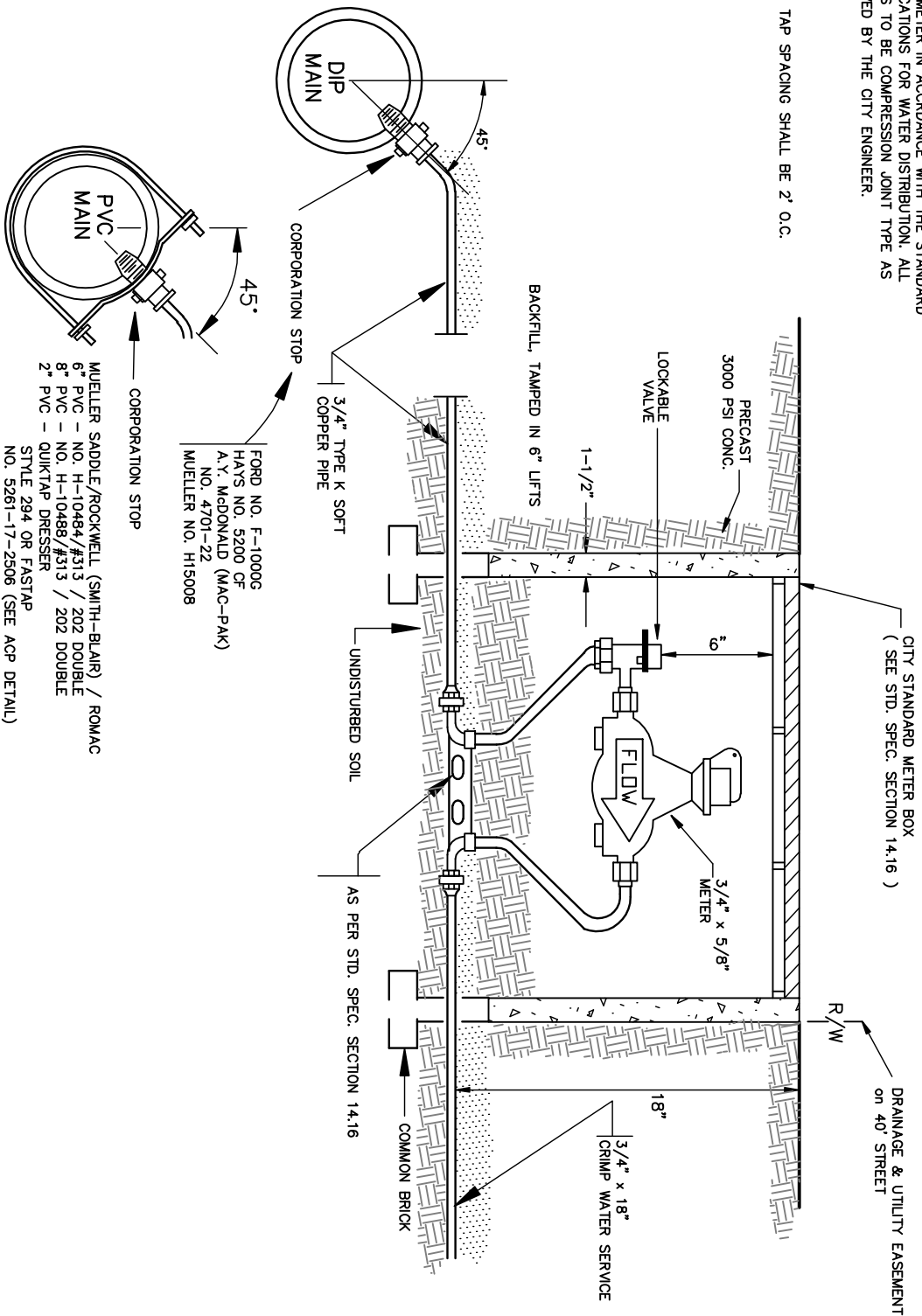


NOTE: WATER METER IN ACCORDANCE WITH THE STANDARD SPECIFICATIONS FOR WATER DISTRIBUTION. ALL FITTINGS TO BE COMPRESSION JOINT TYPE AS APPROVED BY THE CITY ENGINEER.

MINIMUM TAP SPACING SHALL BE 2' O.C.



MUELLER SADDLE/ROCKWELL (SMITH-BLAIR) / ROMAC  
 6" PVC - NO. H-10484/#313 / 202 DOUBLE  
 8" PVC - NO. H-10488/#313 / 202 DOUBLE  
 2" PVC - QUIKTAP DRESSER  
 STYLE 294 OR FASTAP  
 NO. 5261-17-2506 (SEE ACP DETAIL)

FORD NO. F-1000G  
 HAYS NO. 5200 CF  
 A.Y. McDONALD (MAC-PAK)  
 NO. 4701-22  
 MUELLER NO. H15008

REVISED	F.B.	PG.
02-02-01		
05-23-01		
03-10-03		
03-03-09		

DATE:	AUG. 14, 1984
SCALE:	NTS
DRAWN BY:	MLB, EZ, JW
CHECKED BY:	DCC, FAP
CITY ENGINEER:	FAP

## Standard Detail

# 3/4" x 5/8" Water Tap and Meter Details

OFFICE OF THE  
 CITY ENGINEER  
 GASTONIA, N.C.

FILE NO. **71B-20**