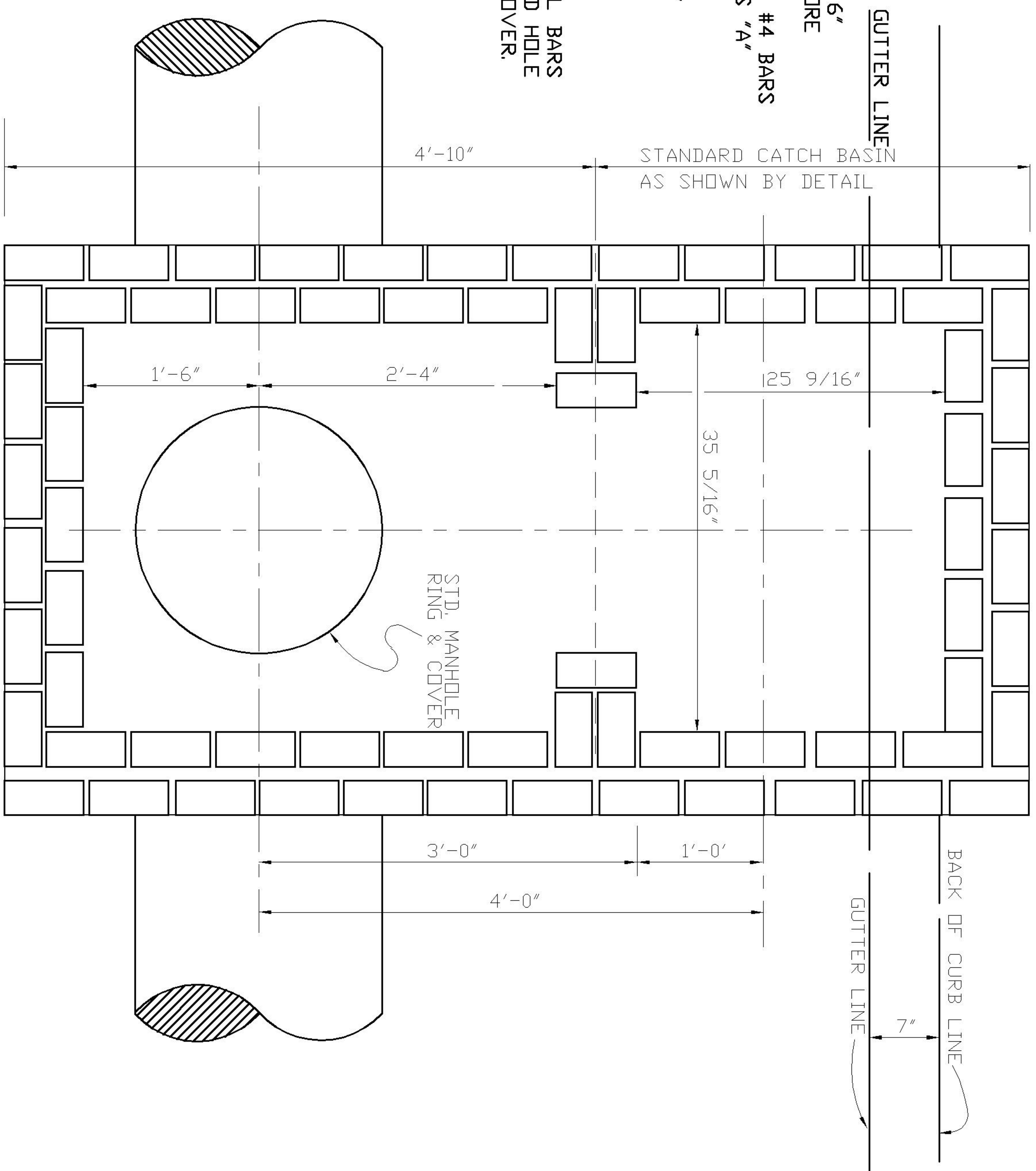


NOTE: SLAB SHALL BE 6" (8" to 12" IF MORE THAN 6' COVER) THICKNESS WITH #4 BARS AT 6' D.C. CLASS "A" CONCRETE. NEED SINGLE JB & FLAT SLAB w/ RING & COVER

NOTE: 4 - #6 DIAGONAL BARS REQUIRED AROUND HOLE FOR RING AND COVER.



REVISED F.B. PG. DATE: 3-21-74
 1/5/95 SCALE: NONE
 9-21-99 DRAWN BY: PNR, EZJDS
 02-16-05 CHECKED BY: NFM, FAP
 CITY ENGINEER: JPB

STANDARD DETAIL

STANDARD COMBINATION JUNCTION BOX & CATCH BASIN

OFFICE OF THE
 CITY ENGINEER
 GASTONIA, N.C.

FILE NO. **71C-7**