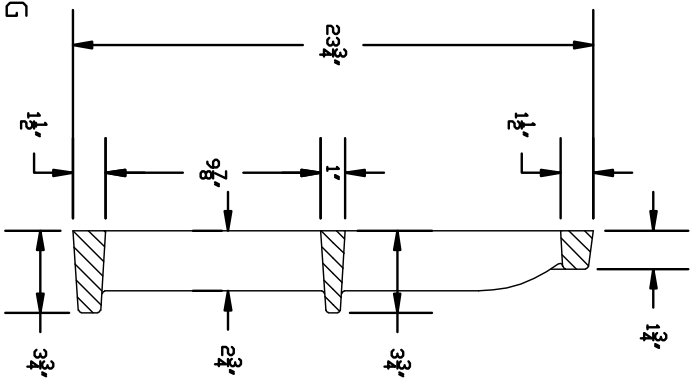
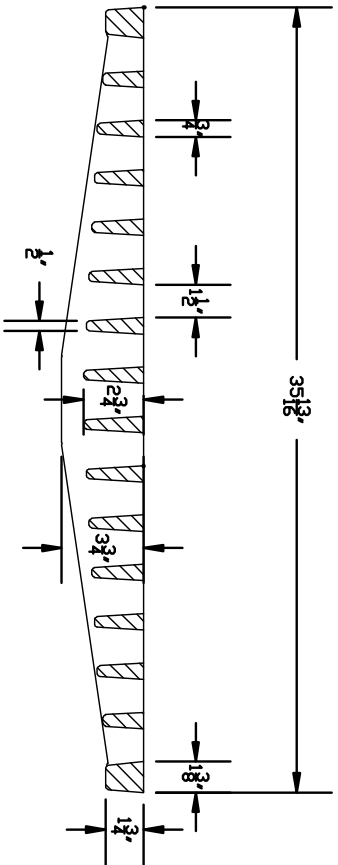


3/4" (19mm) LETTERING
RECESSED FLUSH



SECTION



SECTION

- NOTE:
1. GRAY IRON A.S.T.M. A48 CL35
 2. PRODUCT NO. 44066130 CATALOG NO. V-4066-1 (EAST JORDAN IRON WORKS, INC. EAST JORDAN, MI.)
 3. ENNIS 840.03 TYPE E
 4. US FOUNDRY USF 5181-6420

REVISED	F.B.	PG.	DATE:	2/26/01	Standard Detail	Standard Catch Basin Grate Bi-Directional Flow	OFFICE OF THE CITY ENGINEER GASTONIA, N.C.
5/18/05			SCALE:	None			
			DRAWN BY:	JHD			
			CHECKED BY:				
			CITY ENGINEER:	JPB			FILE NO. 71C-1