

NOTE: ADD THESE DIMENSIONS TO OVERALL DIMENSIONS ON FILE NO. 71C-18 & 19 FOR BRICK HEADWALLS

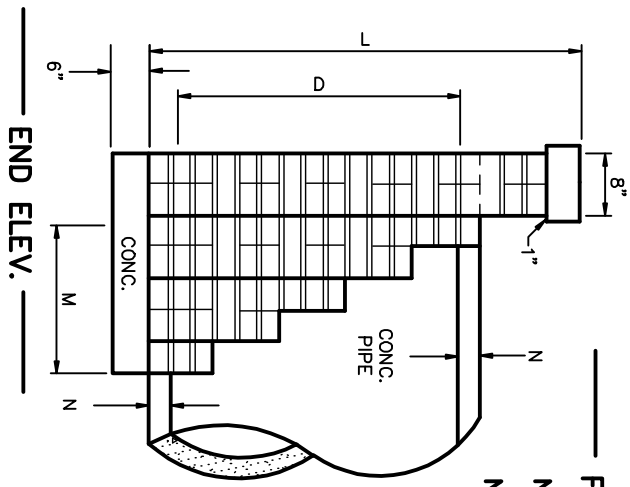
COMMON DIM.			
D	L	M	N
15"	2'-5"	1'-8"	1-7/8"
18"	2'-8"	1'-8"	2"
24"	3'-4"	2'-0"	2-1/2"
30"	3'-9"	2'-4"	2-3/4"
36"	4'-3"	2'-4"	3"
42"	4'-11"	2'-8"	3-1/2"
48"	5'-7"	3'-0"	4"

THESE DIMENSIONS ARE FOR END ELEV. FOR BRICK HW. FOR 48" RCP & UNDER

FRONT ELEV.

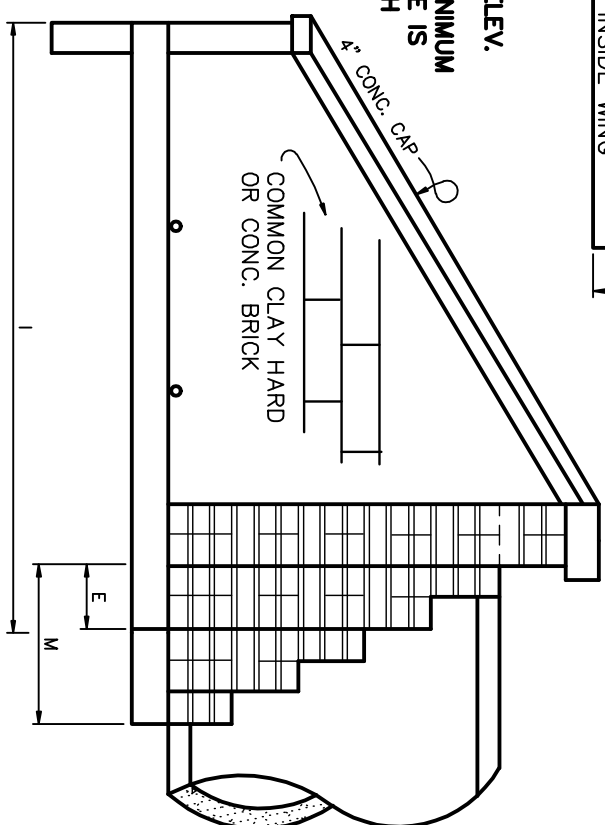
NOTE: SEE 71C-15 FOR TOP ELEV.

NOTE: 1 (ONE) CUBIC FOOT MINIMUM OF #57 WASHED STONE IS REQUIRED BEHIND EACH WEEP HOLE.



END ELEV.

SIDE ELEV.



Standard Detail

Brick Headwall With Wing Walls  
For 48" RCP and Under  
(Without Reinforced Steel)

OFFICE OF THE  
CITY ENGINEER  
GASTONIA, N.C.

FILE NO. 71C-14

REVISED F.B. PG. DATE: 4/20/74

11/1/81  
9/14/90  
SCALE: None  
DRAWN BY: PNR  
CHECKED BY: NBM, FAP  
CITY ENGINEER: DBC