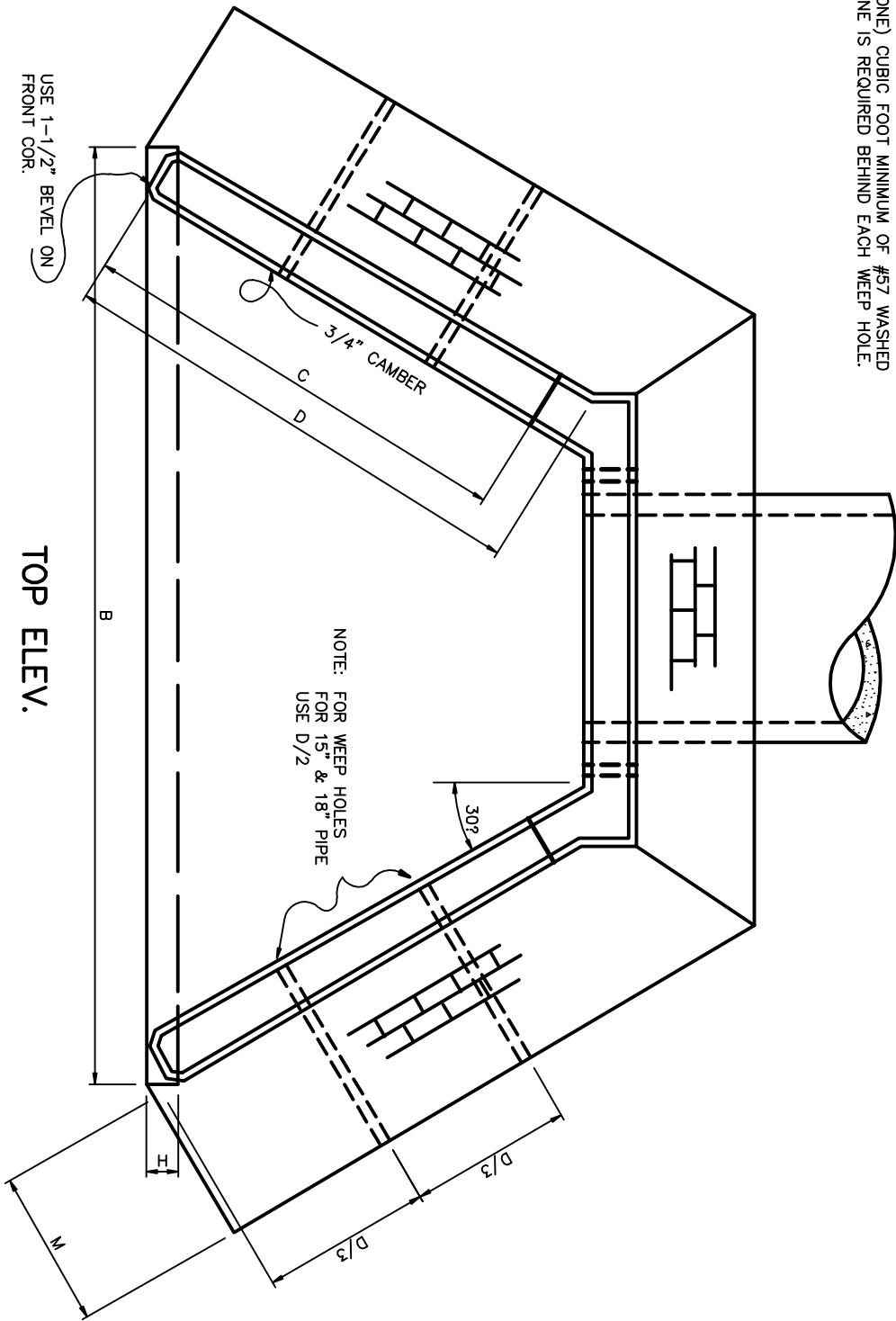


NOTE: 1 (ONE) CUBIC FOOT MINIMUM OF #57 WASHED STONE IS REQUIRED BEHIND EACH WEEP HOLE.



USE 1-1/2" BEVEL ON FRONT COR.

NOTE: FOR WEEP HOLES FOR 15" & 18" PIPE USE D/2

TOP ELEV.

NOTE: SEE FILE NO. 71C-18 & 19 FOR DIMENSIONS AND 71C-14 FOR FRONT ELEV.

REVISED	F.B.	PG.	DATE: 4/22/74
9/14/90			SCALE: None
			DRAWN BY: PNR
			CHECKED BY: FAP
			CITY ENGINEER: DBC

Standard Detail

Brick Headwall With Wing Walls
For Up to 48" RCP
(Without Reinforced Steel)

OFFICE OF THE
 CITY ENGINEER
 GASTONIA, N.C.

FILE NO. **71C-15**