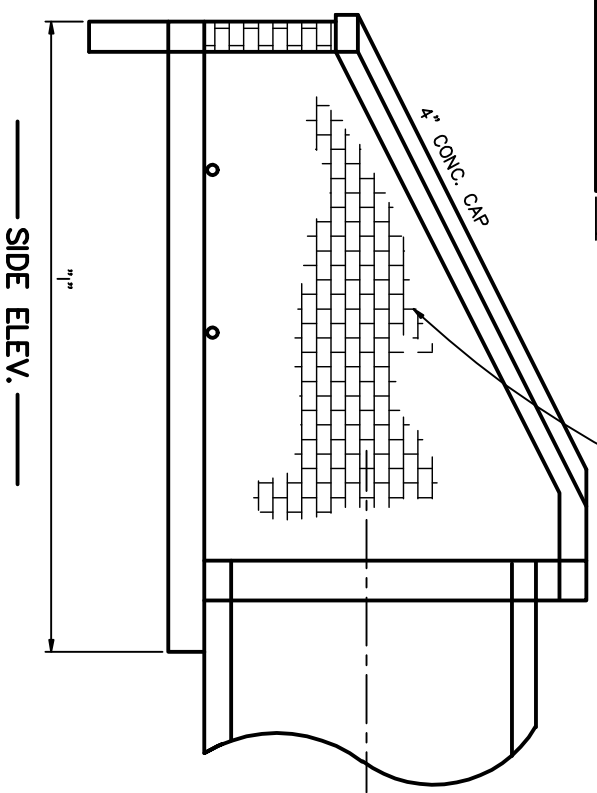


FRONT ELEV.

NOTE: SEE FILE NO. 71C-18 & 19 FOR DIMENSIONS AND 71C-17 FOR TOP ELEV.

NOTE: 1 (ONE) CUBIC FOOT MINIMUM OF # 57 WASHED STONE IS REQUIRED BEHIND EACH WEEP HOLE.



SIDE ELEV.

REVISED	F.B.	PG.	DATE: 4/19/74
9/14/90			SCALE: None

DRAWN BY: PNR
CHECKED BY: NBM, FAP
CITY ENGINEER: DEC

Standard Detail
Reinforced Brick Headwall With Wing Walls
 For 54" RCP and Over
 (With Reinforced Steel)

OFFICE OF THE
 CITY ENGINEER
 GASTONIA, N.C.
 FILE NO. **71C-16**