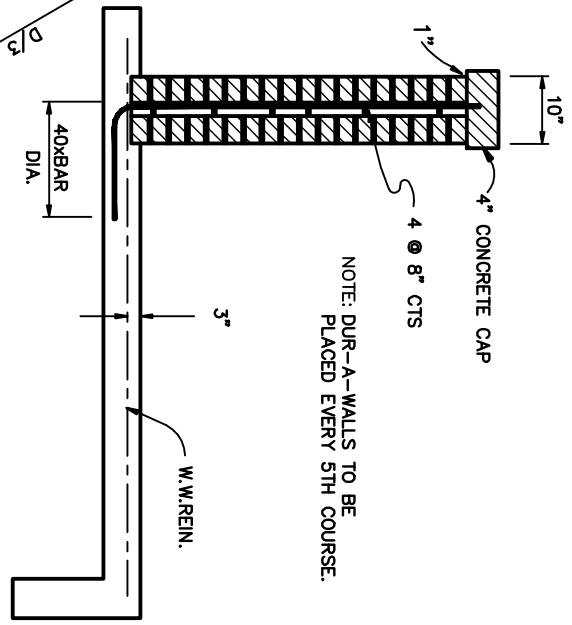


TOP ELEV.

NOTE: SEE FILE NO. 71C-18 & 19 FOR DIMENSIONS AND 71C-16 FOR FRONT ELEV.
 NOTE: 1 (ONE) CUBIC FOOT MINIMUM OF #57 WASHED STONE IS REQUIRED BEHIND EACH WEEP HOLE.



TYPICAL SECTION A-A

NOTE: FILL CAVITY COMPLETELY WITH 3000 PSI CONCRETE.
 CONCRETE SHALL NOT FALL MORE THAN THE HEIGHT OF 5 LAYERS OF BRICK.

REVISED	F.B.	PG.	DATE:	4/20/74
3/21/73			SCALE:	None
9/14/90			DRAWN BY:	PNR
			CHECKED BY:	NBM, FAP
			CITY ENGINEER:	DBC
Standard Detail				
Reinforced Brick Headwall With Wing Walls				
For 54" RCP and Over				
(With Reinforced Steel)				
FILE NO.	OFFICE OF THE CITY ENGINEER GASTONIA, N.C.			
	71C-17			