

NOTES:

EXPANSION JOINTS REQUIRED ON 50' CTS.

MATERIALS REQUIRED

FOR WALL (VERTICAL STEEL NOT INCLUDED, SEE "E" & "F" BAR.)

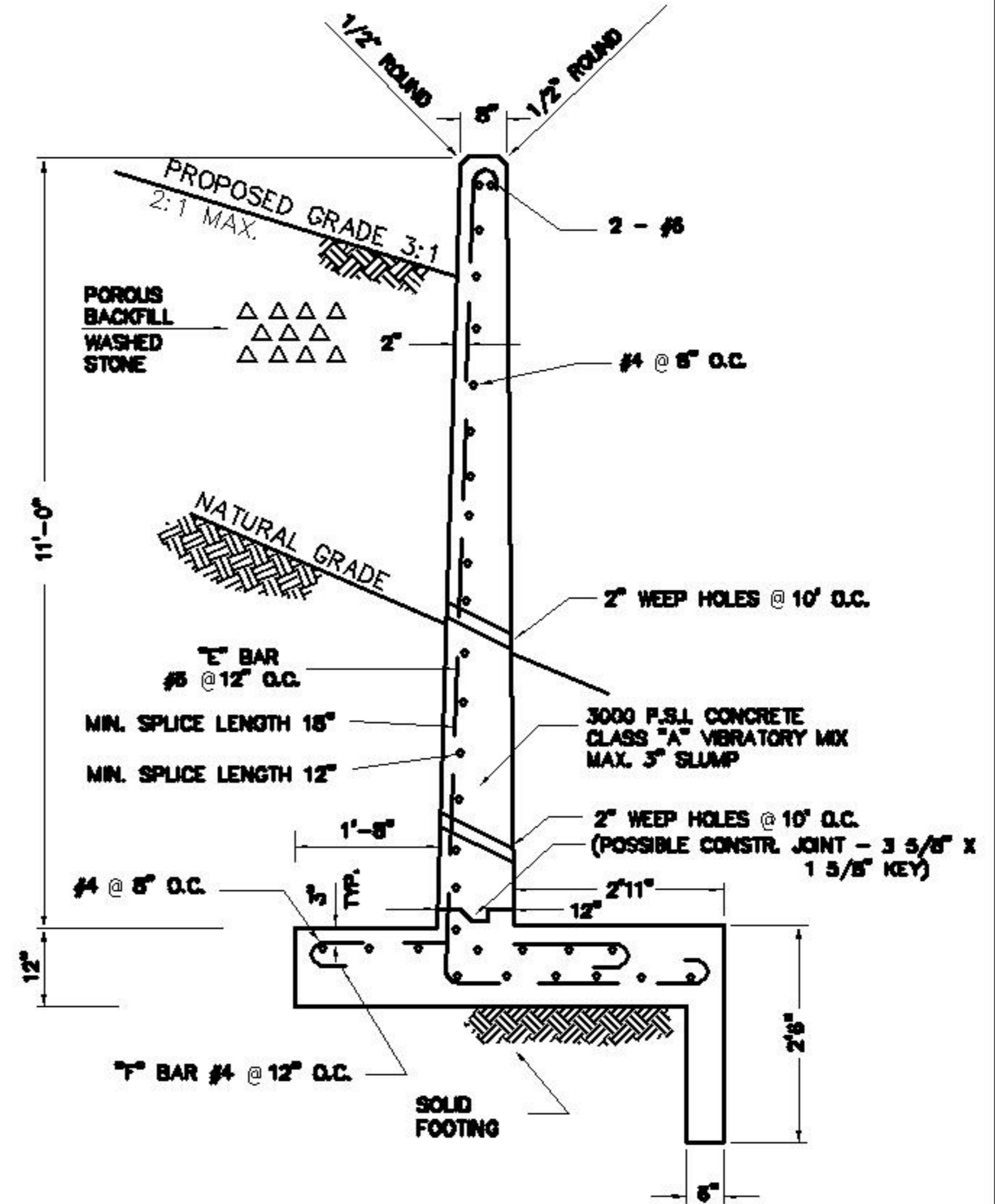
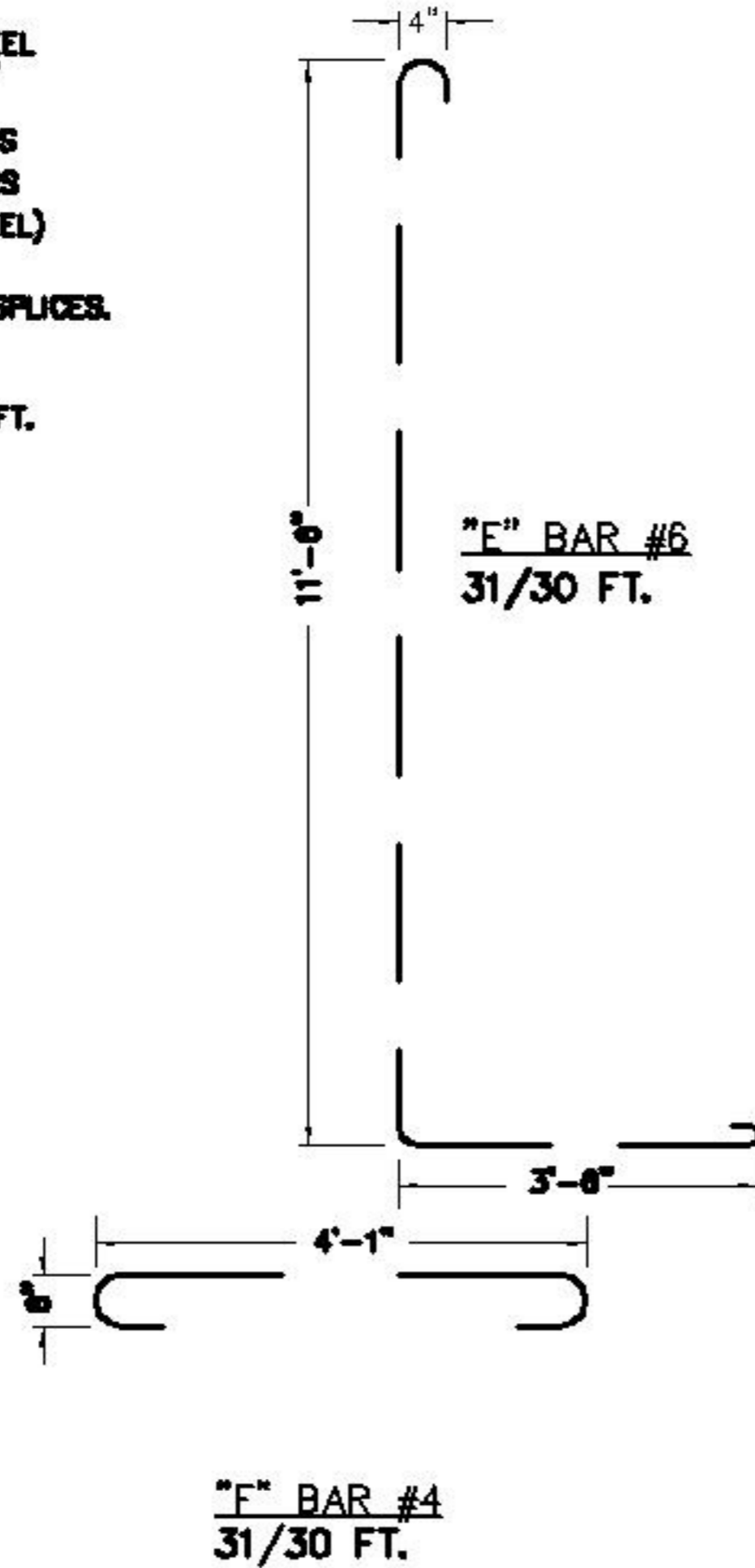
2 LINEAR FT./FT. - #6 BARS
29 LINEAR FT./FT. - #4 BARS (HOR. STEEL)

ADD 5% TO HOR. STEEL FOR SPLICES.

CONC. FOOTING - 0.235 CY./FT.
CONC. WALL - 0.34 C.Y./FT.

REINFORCING BARS

TOLERANCE $\pm 1/2"$
GRADE 40



| | | | |
|---------|------|-----|--------------------|
| REVISED | F.B. | PG. | DATE: 5-12-77 |
| 1/28/82 | | | SCALE: NTS |
| 9/23/96 | | | DRAWN BY: DCC, EZ |
| | | | CHECKED BY: FAP |
| | | | CITY ENGINEER: JPB |

STANDARD DETAIL

11' REINFORCED CONCRETE
RETAINING WALL

OFFICE OF THE
CITY ENGINEER
GASTONIA, N.C.

FILE NO. **71C-30**