

NOTES:

EXPANSION JOINTS ARE TO BE PLACED EVERY 50'.

MATERIALS REQUIRED FOR WALL (VERTICAL STEEL NOT INCLUDED, SEE "E" & "F" BAR.)

2 LINEAR FT./FT. - #8 BARS (HOR. STEEL)

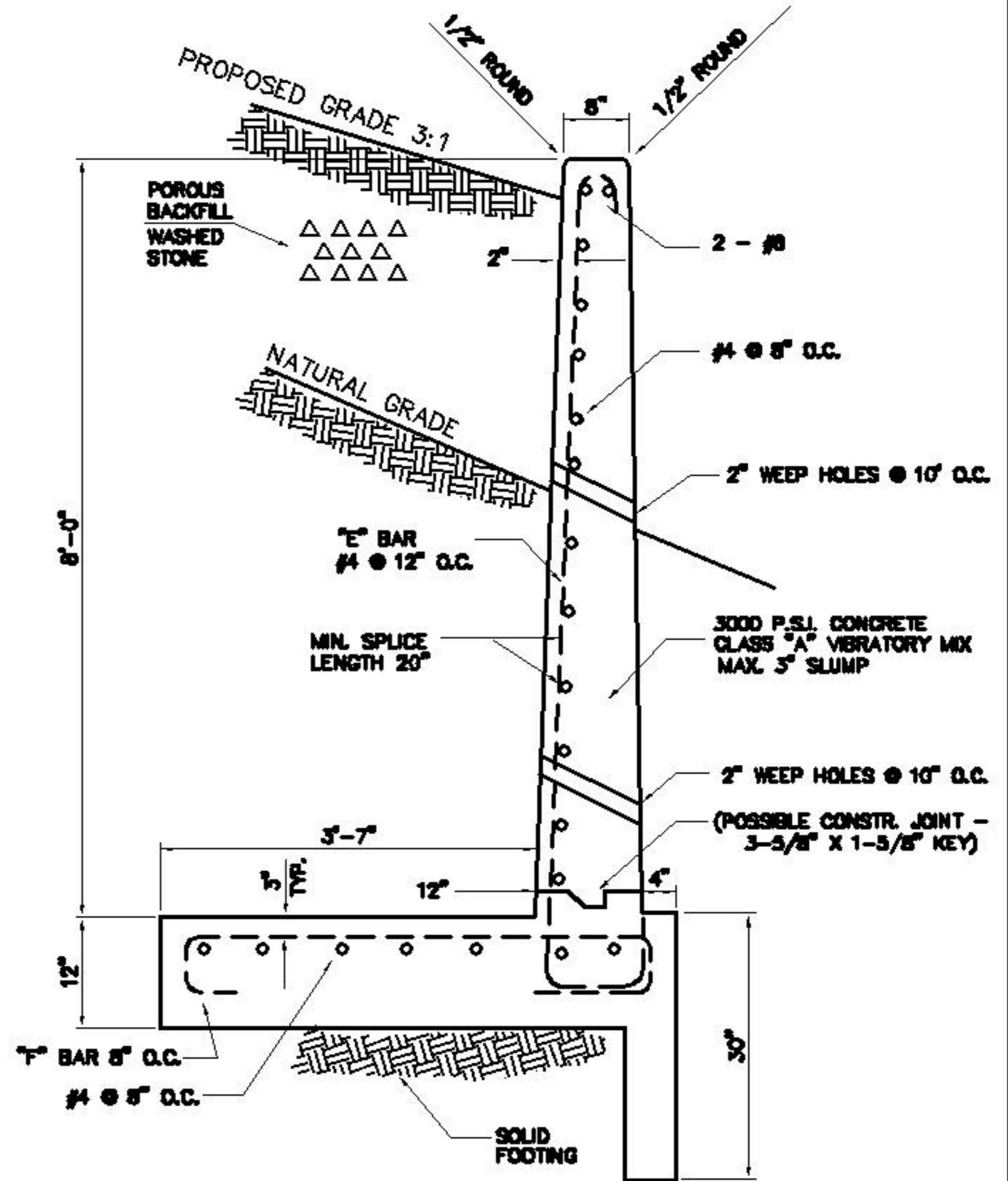
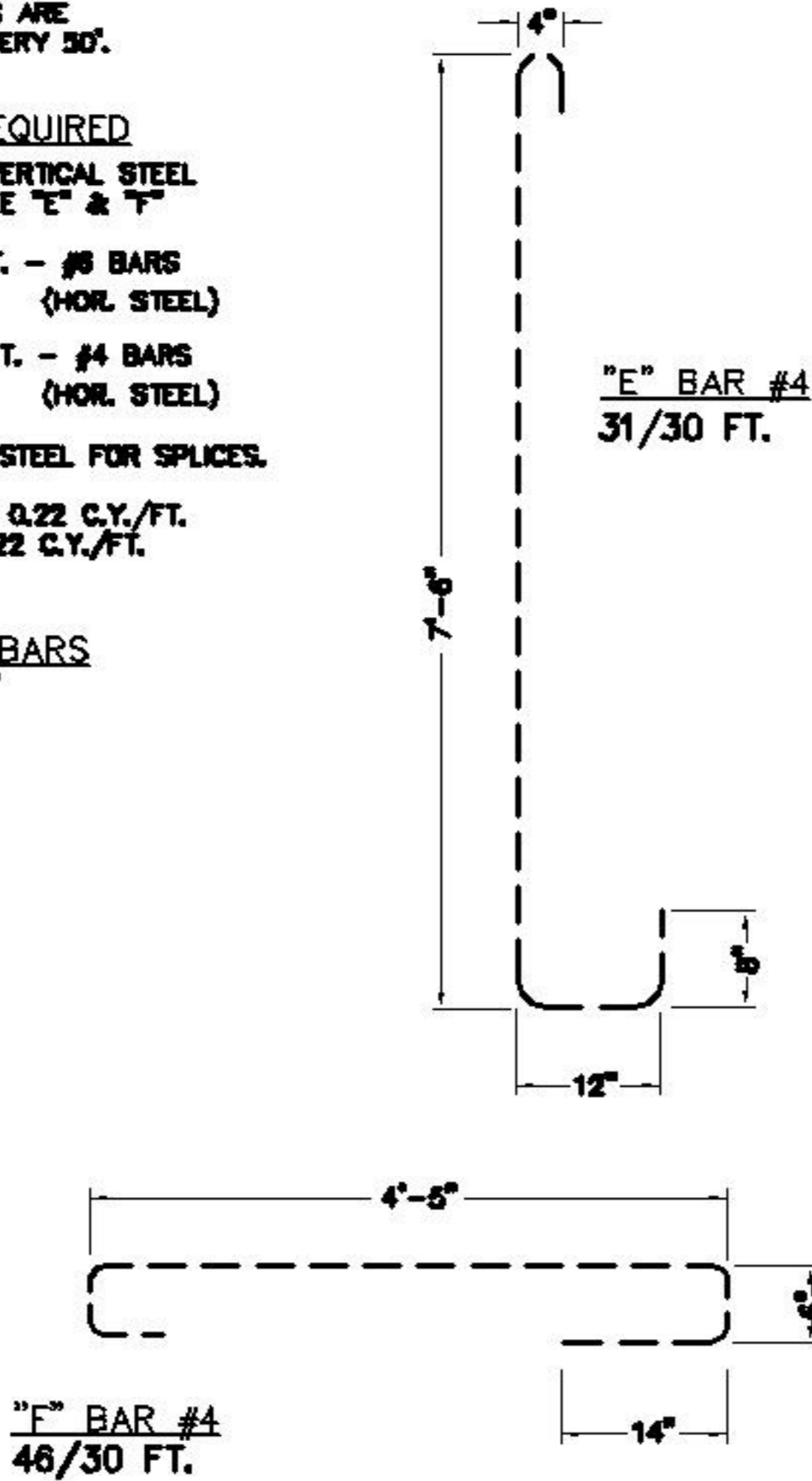
17 LINEAR FT./FT. - #4 BARS (HOR. STEEL)

ADD 5% TO HOR. STEEL FOR SPLICES.

CONC. FOOTING - 0.22 C.Y./FT.
CONC. WALL - 0.22 C.Y./FT.

REINFORCING BARS

TOLERANCE $\pm 1/2"$
GRADE 40



REVISED	F.B.	PG.	DATE: APRIL 25, 1977
10-9-79			SCALE: NTS
			DRAWN BY: TDS
			CHECKED BY: FAP
			CITY ENGINEER: FRW

STANDARD DETAIL

8' REINFORCED CONCRETE RETAINING WALL

OFFICE OF THE
CITY ENGINEER
GASTONIA, N.C.

FILE NO. **71C-31**